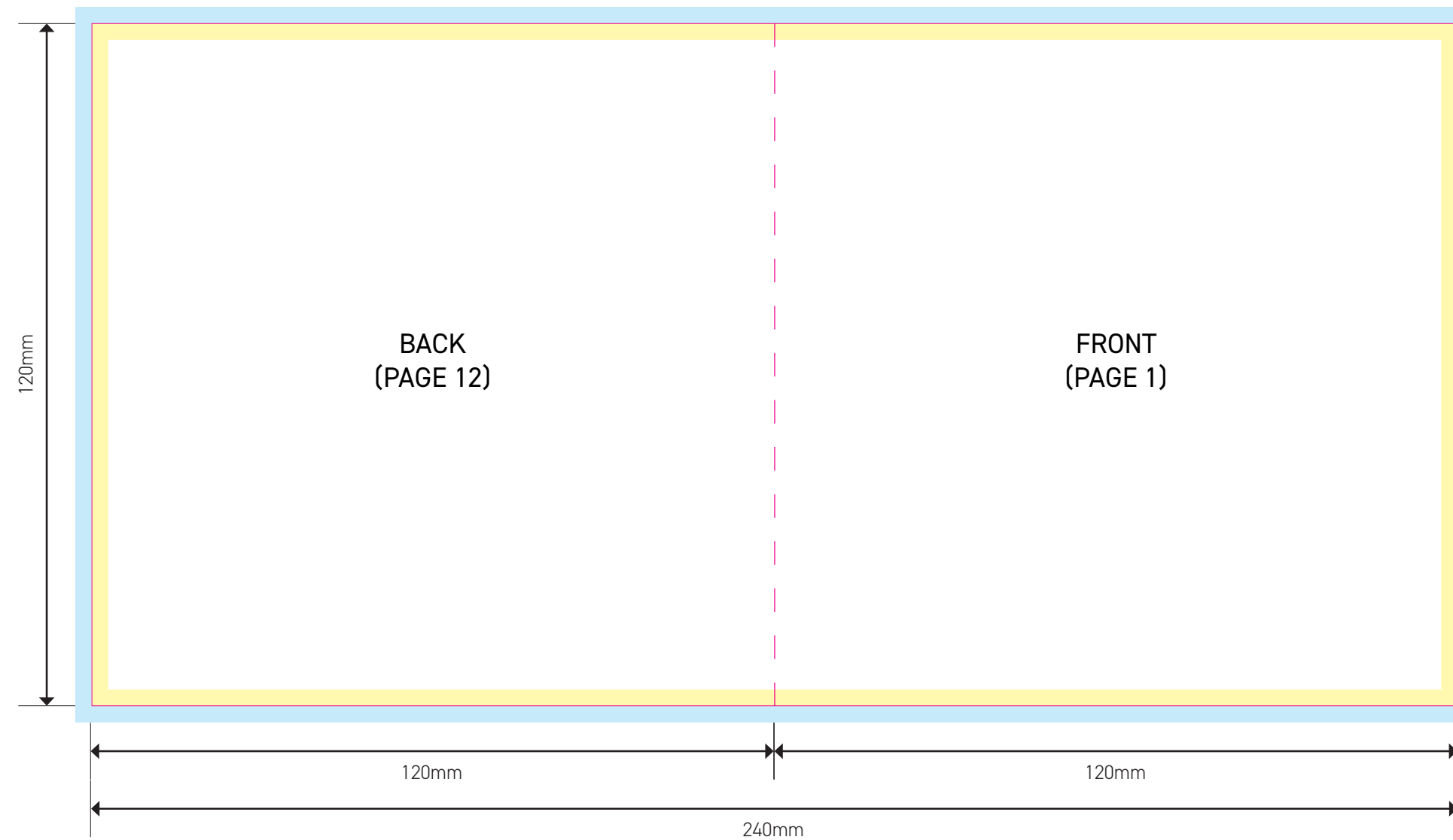


- Cutter
- Fold
- Bleed
- Trim

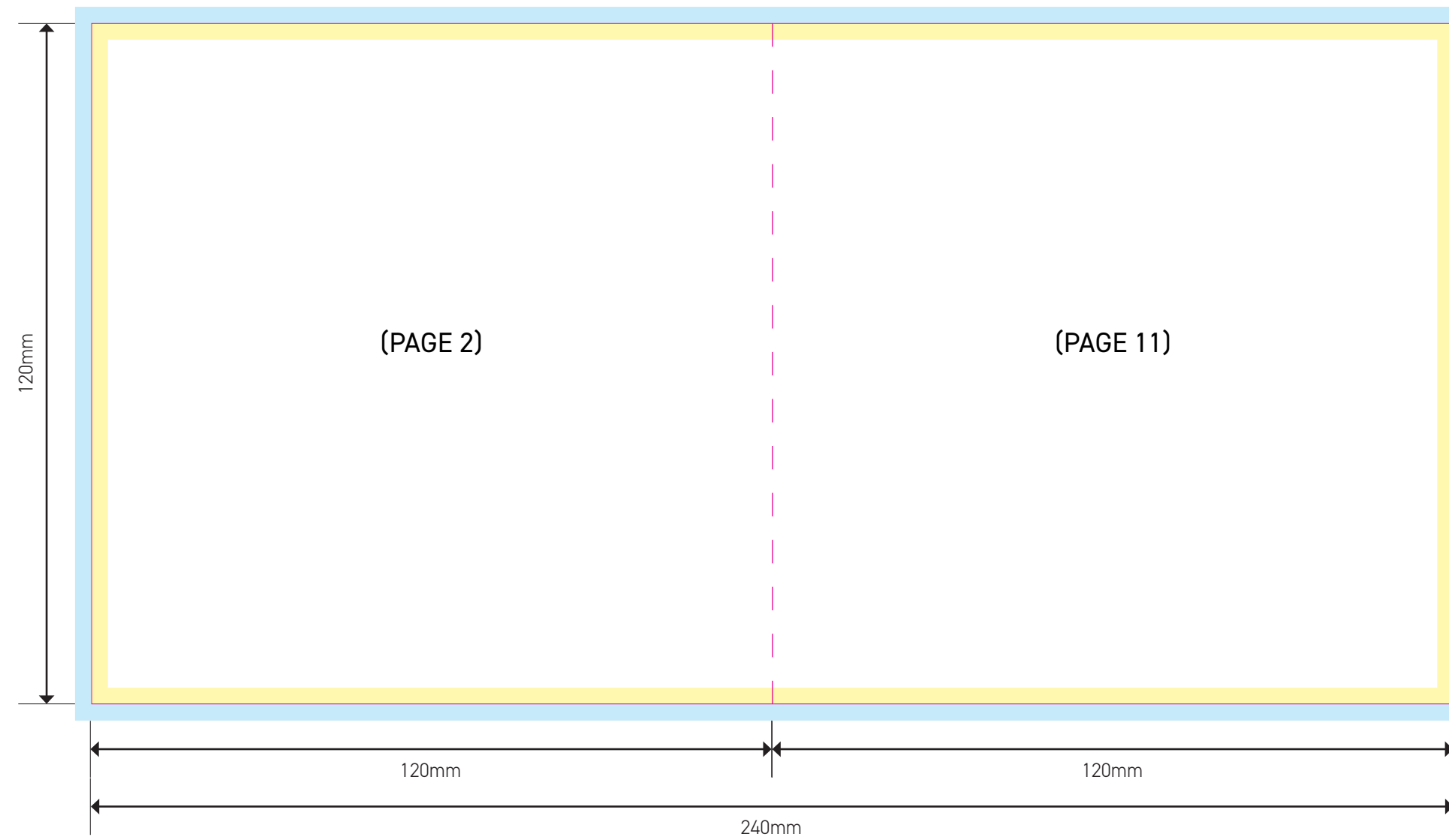


PRINTING TERMS

4/1 - REFERS TO FULL COLOR PRINTING ON ONE SIDE AND BLACK PRINTING ON THE OTHER SIDE.

4/4 - REFERS TO FULL COLOR PRINTING ON BOTH SIDES.

- Cutter
- Fold
- Bleed
- Trim

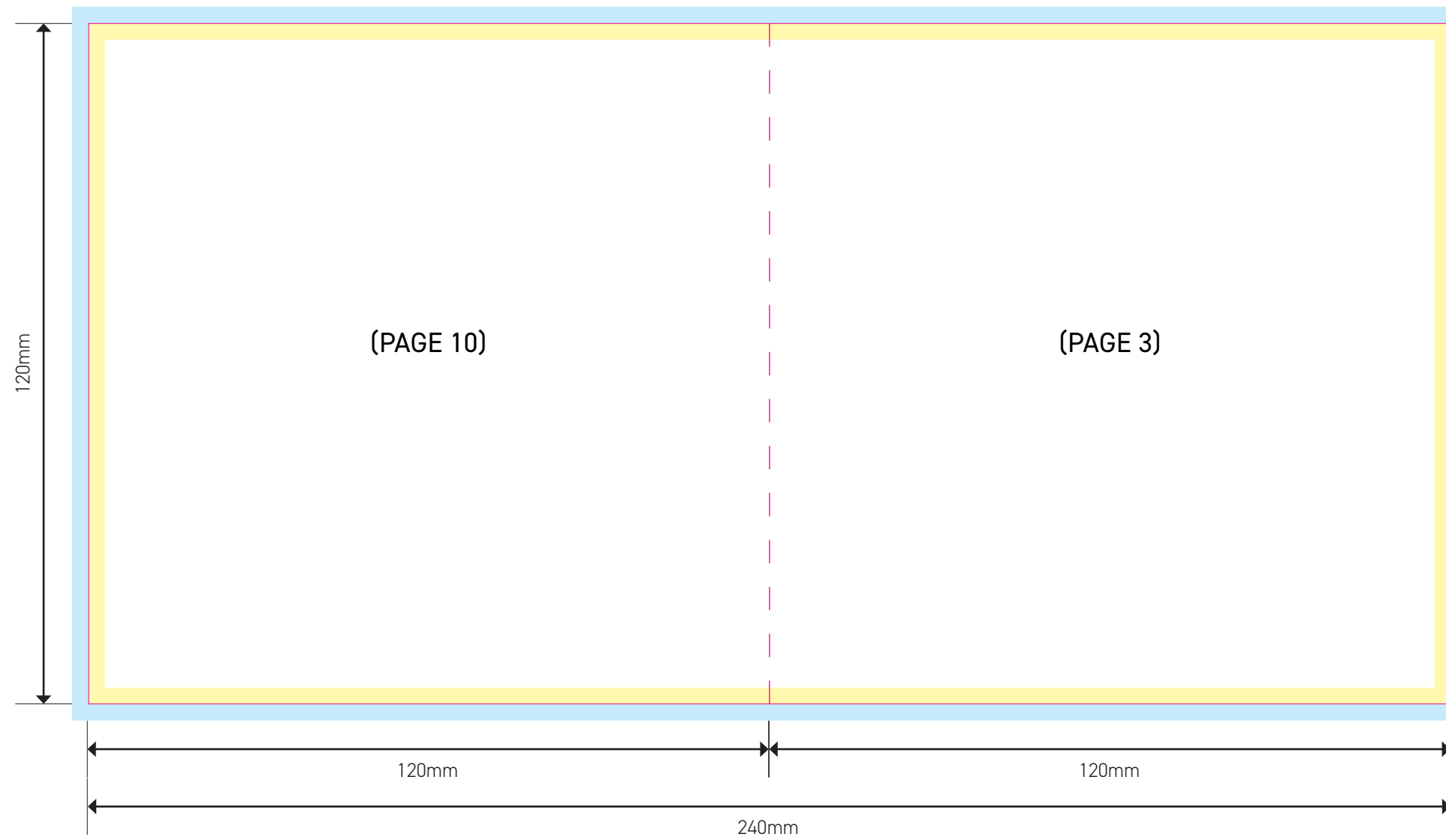


PRINTING TERMS

4/1 - REFERS TO FULL COLOR PRINTING ON ONE SIDE AND BLACK PRINTING ON THE OTHER SIDE.

4/4 - REFERS TO FULL COLOR PRINTING ON BOTH SIDES.

- Cutter
- Fold
- Bleed
- Trim

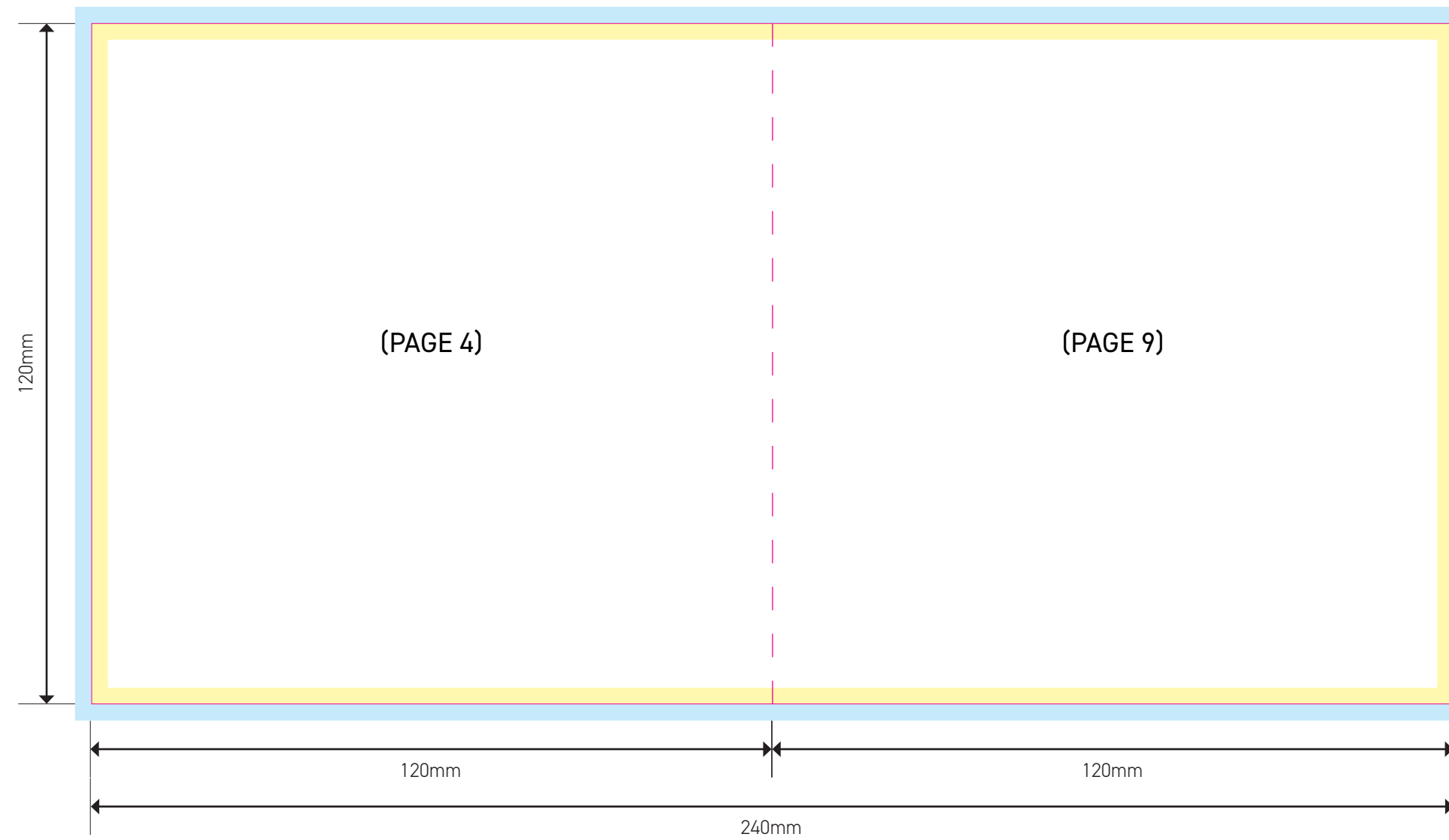


PRINTING TERMS

4/1 - REFERS TO FULL COLOR PRINTING ON ONE SIDE AND BLACK PRINTING ON THE OTHER SIDE.

4/4 - REFERS TO FULL COLOR PRINTING ON BOTH SIDES.

- Cutter
- Fold
- Bleed
- Trim

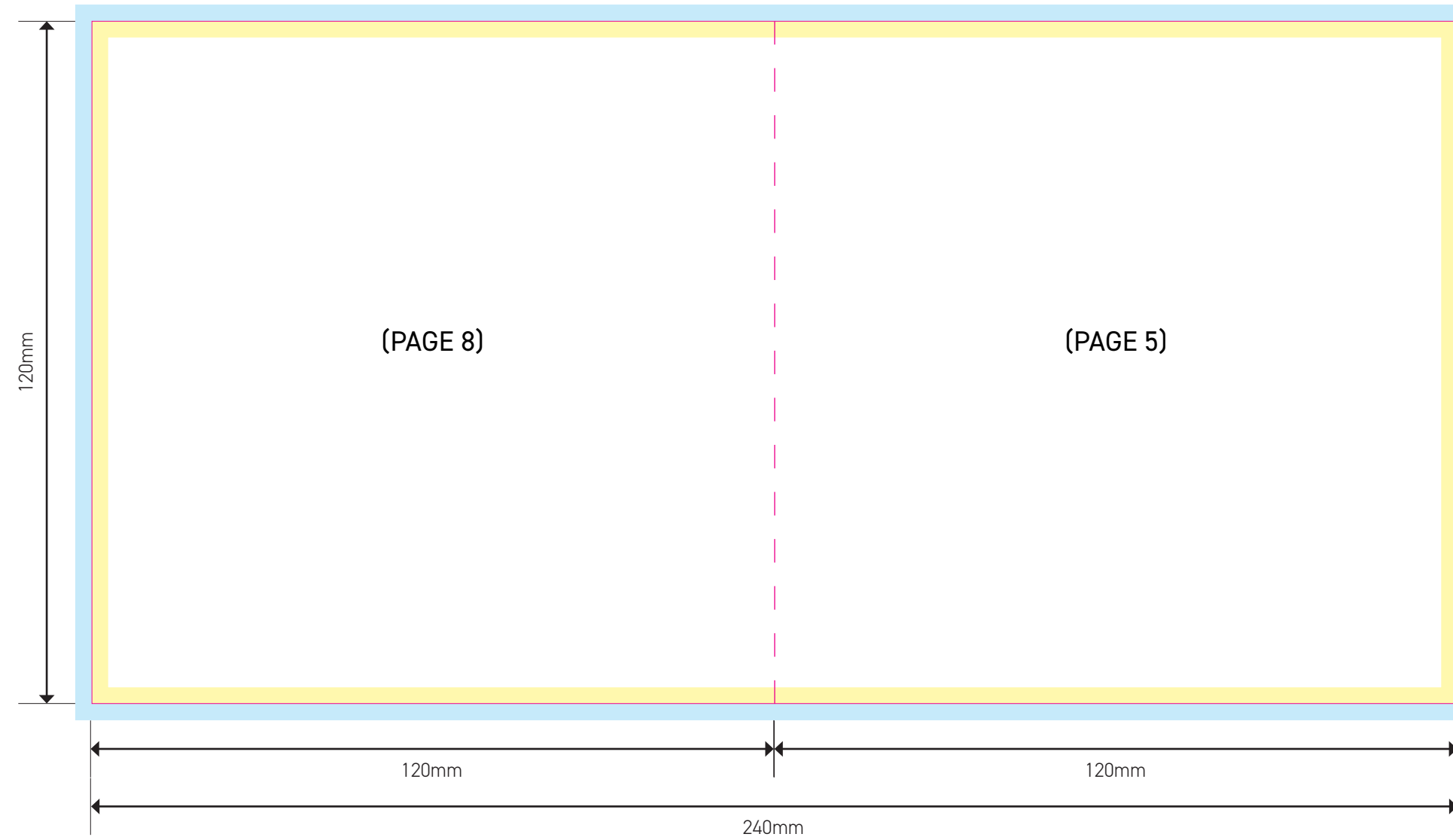


PRINTING TERMS

4/1 - REFERS TO FULL COLOR PRINTING ON ONE SIDE AND BLACK PRINTING ON THE OTHER SIDE.

4/4 - REFERS TO FULL COLOR PRINTING ON BOTH SIDES.

- Cutter
- Fold
- Bleed
- Trim

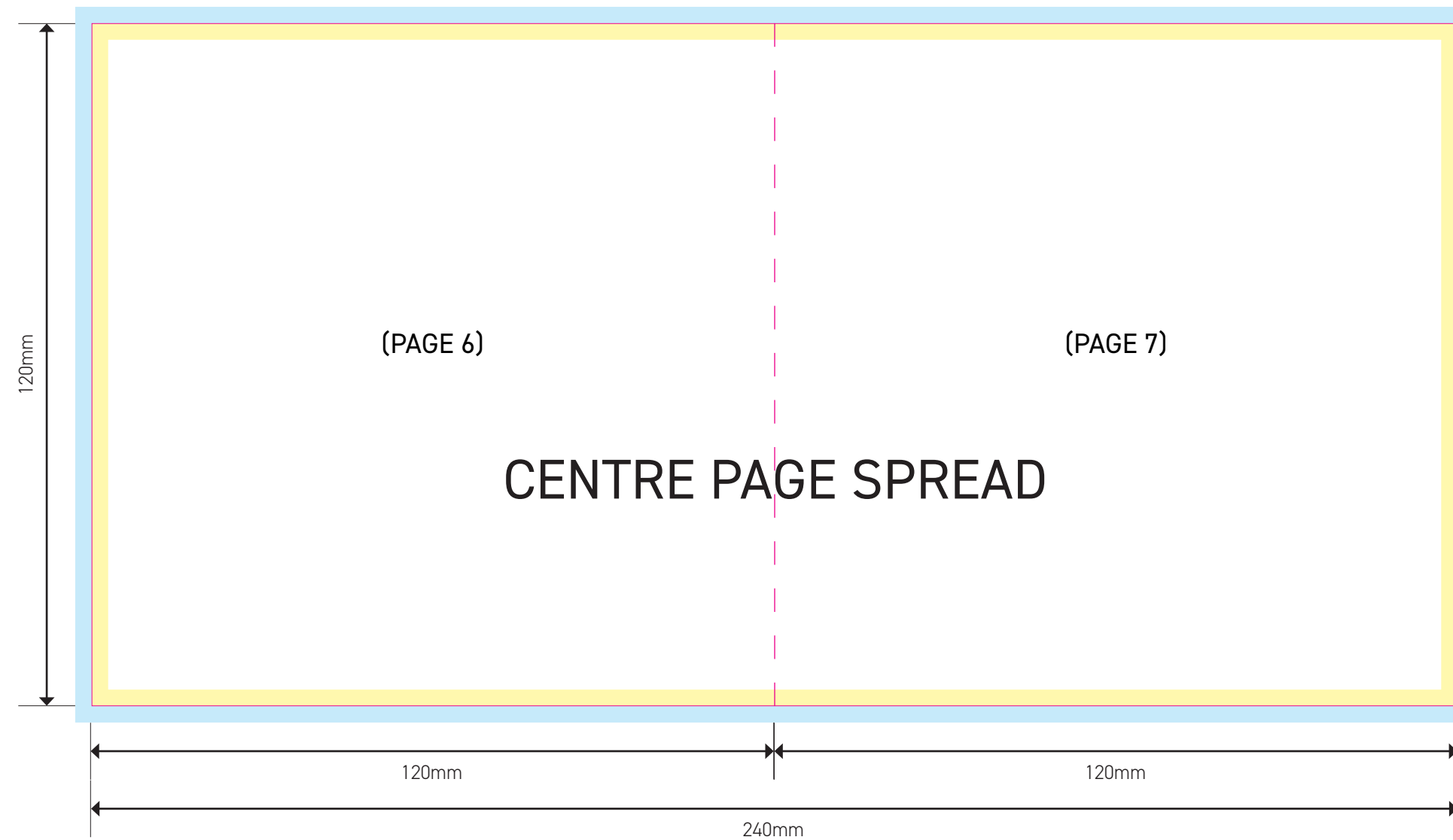


PRINTING TERMS

4/1 - REFERS TO FULL COLOR PRINTING ON ONE SIDE AND BLACK PRINTING ON THE OTHER SIDE.

4/4 - REFERS TO FULL COLOR PRINTING ON BOTH SIDES.

- Cutter
- Fold
- Bleed
- Trim



PRINTING TERMS

4/1 - REFERS TO FULL COLOR PRINTING ON ONE SIDE AND BLACK PRINTING ON THE OTHER SIDE.

4/4 - REFERS TO FULL COLOR PRINTING ON BOTH SIDES.