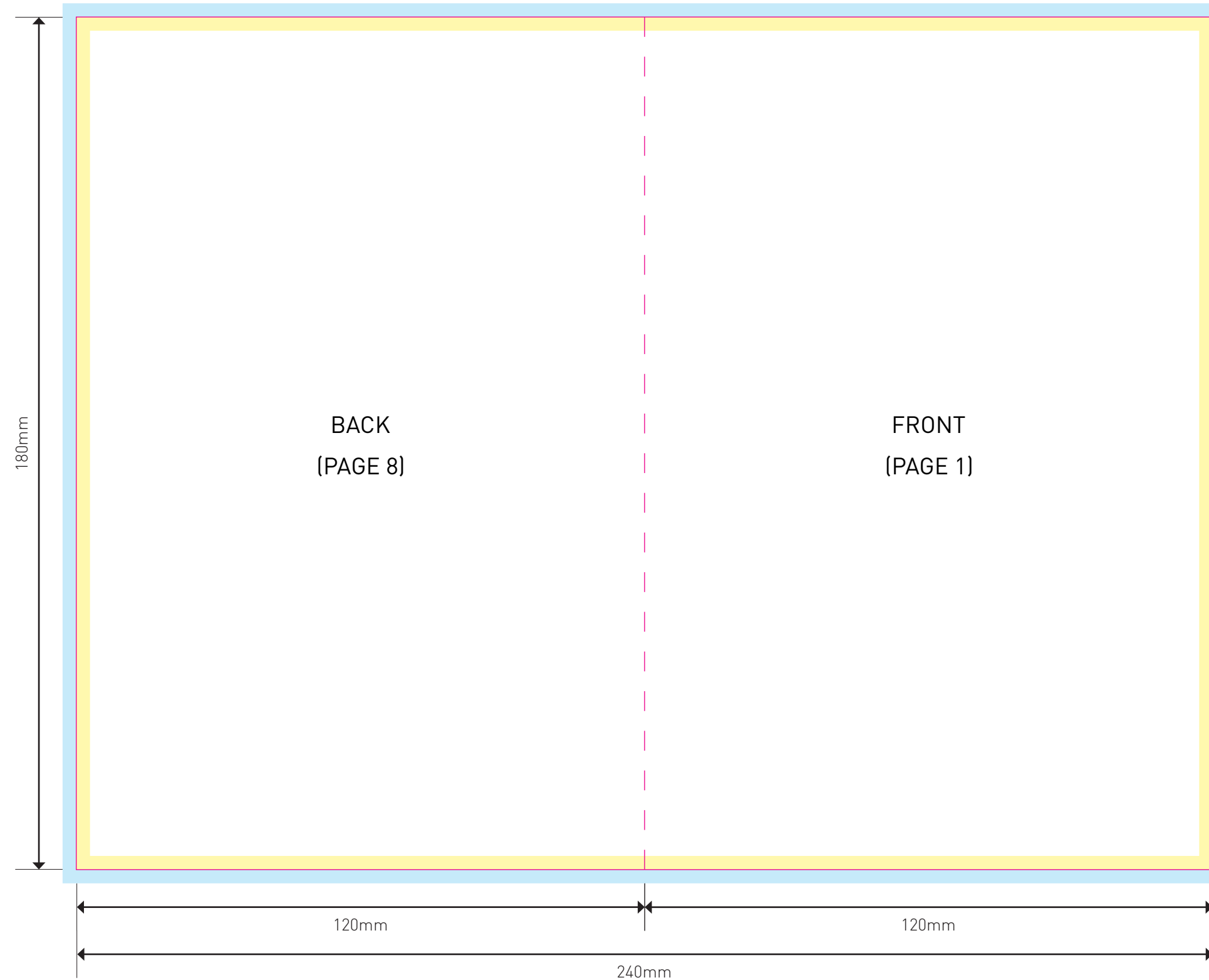


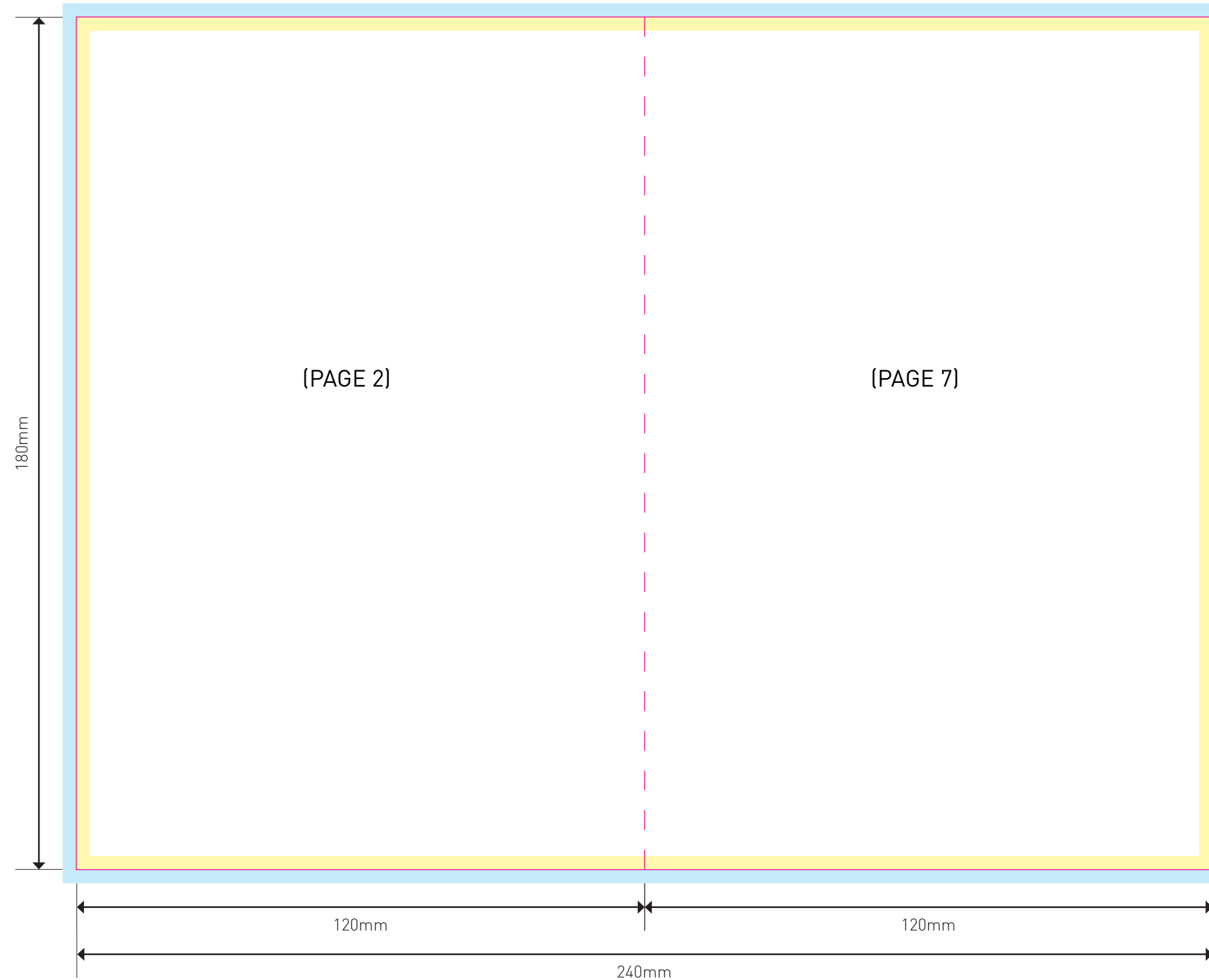
- Cutter
- Fold
- Bleed
- Trim



**PRINTING TERMS**

- 4/0** - REFERS TO FULL COLOR PRINTING ON ONE SIDE OF THE PRINTED PAGE.
- 4/1** - REFERS TO FULL COLOR PRINTING ON ONE SIDE AND BLACK PRINTING ON THE OTHER SIDE.
- 4/4** - REFERS TO FULL COLOR PRINTING ON BOTH SIDES.

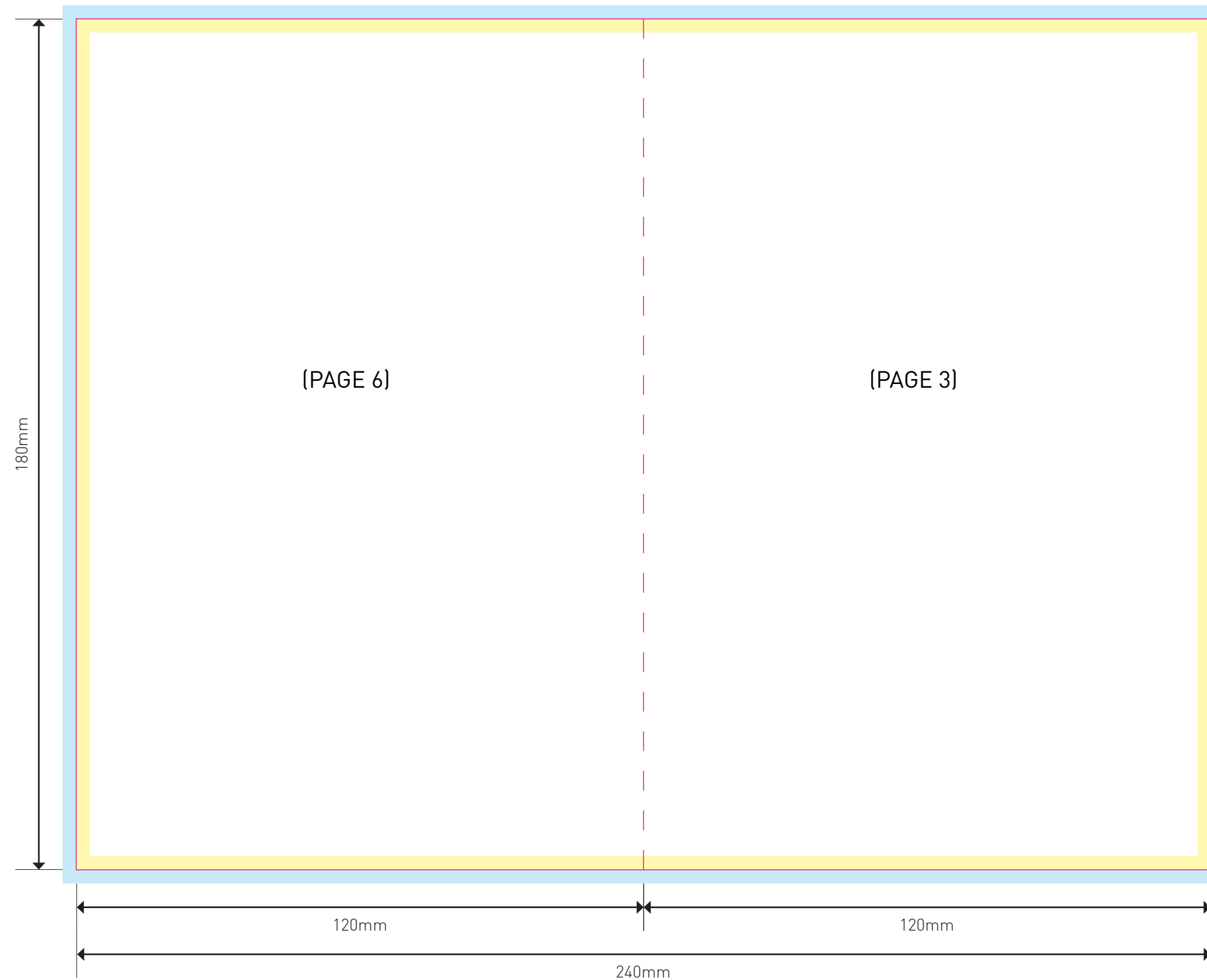
- Cutter
- Fold
- Bleed
- Trim



**PRINTING TERMS**

- 4/0** - REFERS TO FULL COLOR PRINTING ON ONE SIDE OF THE PRINTED PAGE.
- 4/1** - REFERS TO FULL COLOR PRINTING ON ONE SIDE AND BLACK PRINTING ON THE OTHER SIDE.
- 4/4** - REFERS TO FULL COLOR PRINTING ON BOTH SIDES.

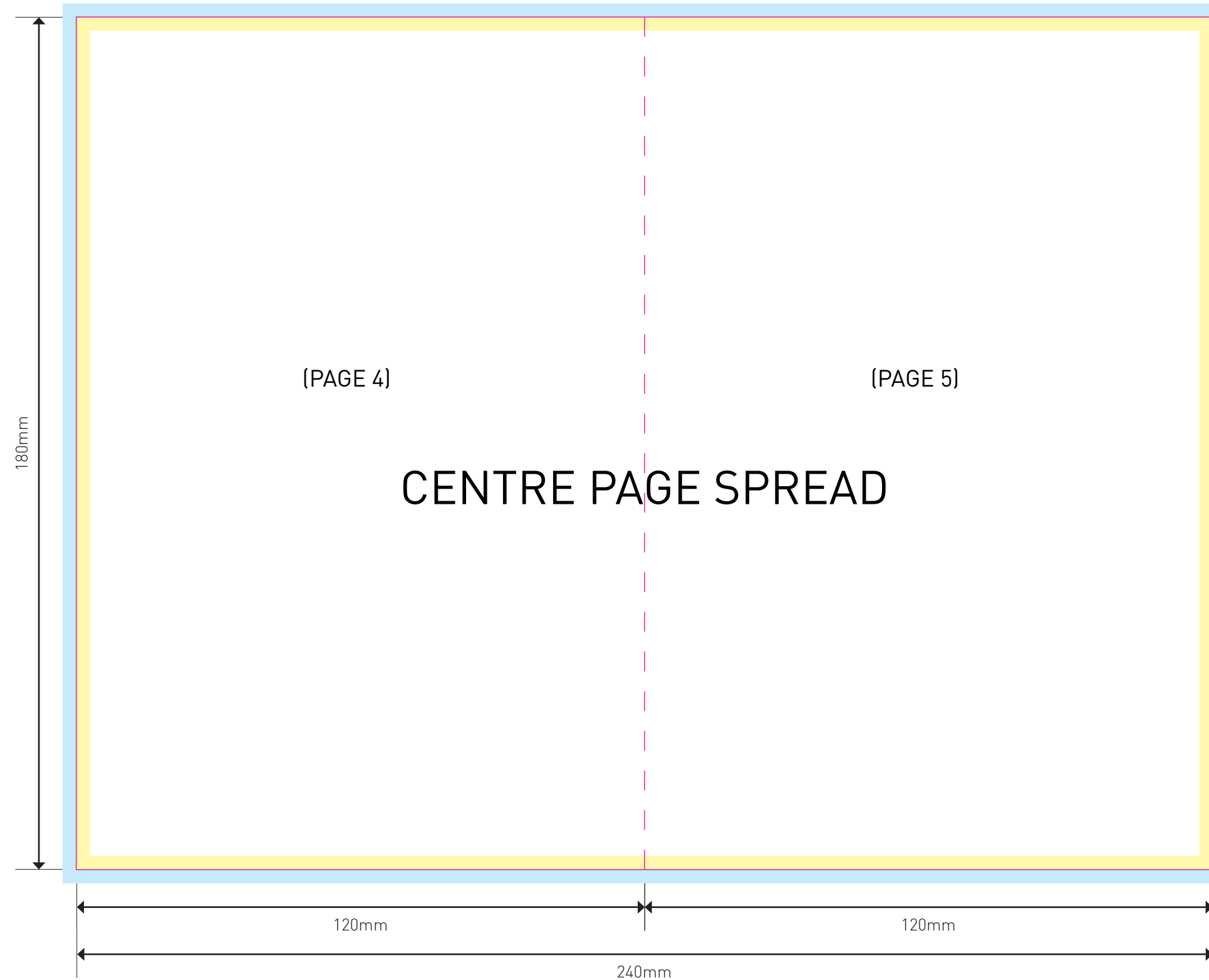
- Cutter
- Fold
- Bleed
- Trim



**PRINTING TERMS**

- 4/0** - REFERS TO FULL COLOR PRINTING ON ONE SIDE OF THE PRINTED PAGE.
- 4/1** - REFERS TO FULL COLOR PRINTING ON ONE SIDE AND BLACK PRINTING ON THE OTHER SIDE.
- 4/4** - REFERS TO FULL COLOR PRINTING ON BOTH SIDES.

- Cutter
- Fold
- Bleed
- Trim



**PRINTING TERMS**

- 4/0** - REFERS TO FULL COLOR PRINTING ON ONE SIDE OF THE PRINTED PAGE.
- 4/1** - REFERS TO FULL COLOR PRINTING ON ONE SIDE AND BLACK PRINTING ON THE OTHER SIDE.
- 4/4** - REFERS TO FULL COLOR PRINTING ON BOTH SIDES.